



Owner's Manual

TRC-1280

Network Remote



This remote control was Custom Programmed for you by:

For questions about your Custom Programming call:

Custom Programming of a complex home theater and/or a multi-room system is one of the most challenging tasks within an audio/video installation. It involves an intimate knowledge of how the components interact and exact details on the proper sequences of control.

Only a Total Control dealer has the requisite experience and training to quickly and effectively customize a remote control for true automated operation.

Congratulations on your choice!

TRC-1280 Owner's Manual © 2012-2014 Universal Remote Control, Inc.

The information in this owner's manual is copyright protected. No part of this manual may be copied or reproduced in any form without prior written consent from Universal Remote Control, Inc.

UNIVERSAL REMOTE CONTROL, INC. SHALL NOT BE LIABLE FOR OPERATIONAL, TECHNICAL OR EDITORIAL ERRORS/OMISSIONS MADE IN THIS MANUAL.

The information in this owner's manual may be subject to change without prior notice.

URC - Control the Experience is a registered trademark of Universal Remote Control, Inc.

Total Control is a registered trademark of Universal Remote Control, Inc.

All other brand or product names are trademarks or registered trademarks of their respective companies or organizations.



500 Mamaroneck Avenue, Harrison, NY 10528
Phone: (914) 835-4484 Fax: (914) 835-4532

Congratulations!	1
Using the TRC-1280	2
Connecting the Battery Pack	3
Using the Charging Base	3
Two-Way via WiFi	3
Displaying the Settings Screen	4
Sleep Settings	5
Wireless Network Settings	5
Brightness	5
System	5
Button Light	6
Power	6
Calibration	6
Date and Time	6
Sound & Vibration	7
Pickup	7
Factory Default	7
Exit	7
Maintaining Your TRC-1280	8
Specifications	8
Limited Warranty Statement	9
End User Agreement	11
Precautions and Information Concerning Rechargeable Lithium Polymer Batteries	12
Federal Communication Commission Interference Statement	13
Regulatory Information to the User	14
Declaration of Conformity	15

Congratulations!

Thank you for purchasing the Total Control TRC-1280 universal remote control. This unit can control every connected device in your home using the Total Control Advanced System Controller. You can also control devices located in different rooms via Wi-Fi. Controlling your home is simple with the TRC-1280 remote.



Two-way Instant-Wi-Fi controller with dazzling 2.8" color touch screen interface

Receive two-way feedback for the rooms and music sources that can be controlled. Turn On/Off music while also viewing the current selections artist name, album and song title.

Vibrating Haptic Technology confirms button presses

The TRC-1280 has an Active Matrix color TFT display with vibrating Haptic feedback technology. When touching of an LCD button, the screen vibrates to confirm the button press.

Includes rechargeable Lithium Polymer Batteries and charger base

The TRC-1280 comes equipped with a Lithium Polymer battery that is rechargeable with the 6V charging base. You no longer need to waste money on disposable batteries or trying to locate misplaced batteries.

Requires MRX-10 or compatible URC Advanced System Controller

In combination with an MRX-10 or compatible URC Advanced System Controller, the TRC-1280 can control your system without being in line-of-sight of the equipment by sending the commands over your home network.

Programmable only by URC certified professional programmer on-premises or off-premises via the Internet

To fully automate your audio/video system, the programmer must have detailed knowledge of each component, LAN configuration, Wi-Fi optimization and how the system is connected and operated. With the ability to connect the TRC-1280 to an MRX-10 or compatible URC Advanced Controller, your installer can program the remote, with your permission, from his office should the need arise. Only a trained and certified professional audio/video installer can install a TRC-1280 remote control in a timely and efficient manner.

Using the TRC-1280

The TRC-1280's Main Menu pages display the activities and devices in your system. Press the Main page button to see what your choices are. Large systems may have more than one page. Press either of the Page buttons to see further options.

Gently press any screen button with your finger to select an activity or a device. The screen will change to display the buttons you need for that activity/device. The Page buttons may reveal additional buttons for some devices and activities.

When you would like to control another device, press the Main or Page buttons and select a new device from the Main page.

The **Main** button always displays the Main menu pages.

The **Page** buttons display additional pages of controls.

The **Volume** and **Mute** buttons are always available regardless of what screen is displayed.

The **5-way cursor buttons** enables you to both scroll lists of artists, albums or songs from your Music Server on the TRC-1280 touch screen or to navigate TV guides and menus with ease.



Connecting the Battery Pack

Unlock the rear cover by pressing down on the spring lock at the top of the cover. Remove the cover. For shipment from the factory, the battery is left out of the TRC-1280. Place the battery into the battery compartment, making sure you align the contacts on the battery to the contacts on the TRC-1280. The battery will snap into place when aligned properly. Replace the cover and snap it into place.

Using the Charging Base

Plug the 6V DC adapter into a power outlet and into the back of the charging base. Gently place the TRC-1280 into the cradle of the charging base. It automatically aligns itself to the contacts on the charging base. The Status light should immediately light. Red indicates that it is charging. Blue shows that it is fully charged. There is no harm in leaving the TRC-1280 on its charging base whenever it is not in use.



Red indicates charging, Blue that the remote is fully charged.

Two-Way via Wi-Fi

To use the TRC-1280 with any two-way companion product, the TRC-1280 must be configured by your installer to be part of a LAN (local area network) via a Wi-Fi b/g access point or router. This is not user configurable. If you have any questions, consult your custom installer.

Displaying the Settings Screen

You can enter the Settings menu by pressing and holding the MAIN and OK button for three seconds. Once there, if you do not press any button on the Settings screen, the TRC-1280 will timeout after 60 seconds and return to the previous setting or Main screen. There are two pages of Settings screens. To access the other page, press either of the Page buttons. To select a setting, press the button on the LCD screen. To go back a step or to get out of the settings screen, press the MAIN button.

There are two pages of Settings screen. To access the other page, press either of the Page buttons.

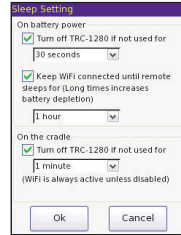


Page buttons reveal the rest of the settings.

Page 2 of the Settings Screen

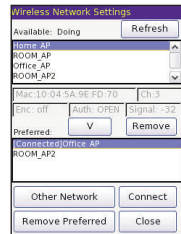
Sleep Settings

Wi-Fi and backlighting can be separately adjusted to conserve battery life. Note that when the backlight is set to turn off, the remote is not connected to the network. Picking up or waking the TRC-1280 will reconnect it to the Wi-Fi network.



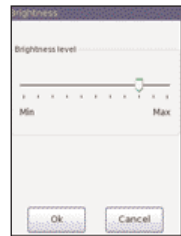
Wireless Network Settings

WARNING! Only use this button when instructed to by Technical Support. The screen displays network information about your TRC-1280 and the wireless network it is connected to. Do not make any changes on this screen!



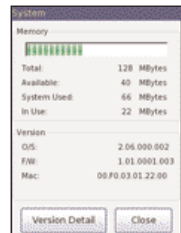
Brightness

Adjust the screen brightness by moving the slider. Min (minimum) is the dimmest setting and Max (maximum) is the brightest setting.



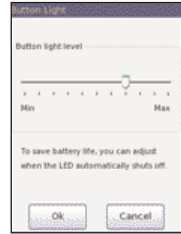
System

The System Information screen displays data about your TRC-1280's Operating System, Memory etc.



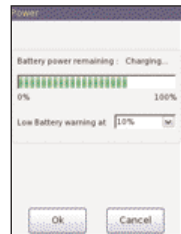
Button Light

You can adjust the brightness of the LEDs that backlight the buttons of the TRC-1280. Move the slider left to dim the backlighting and move it right to brighten the backlighting.



Power

You can display the remaining charge by selecting Power. You can also adjust when the Low Battery warning screen will appear.

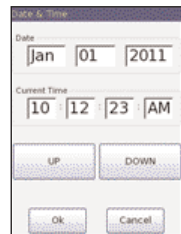


Calibration

To calibrate button presses, adjust the onscreen “tap” location with a pen top or PDA stylus. Using your fingers to calibrate the screen may result in inconsistent button presses.

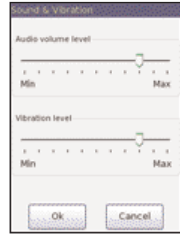
Date and Time

Your TRC-1280 may have been programmed to display the time or date on the touch screen. If you need to, you can adjust the time displayed by changing the settings on this screen.



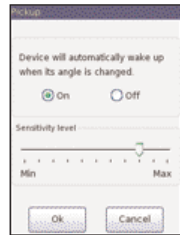
Sound & Vibration

Adjust the volume and vibration levels by touching and dragging the slider to your desired Min/Max levels.



Pickup

You can set your TRC-1280 to only turn on when touched, or every time you move it. Simply select On or Off. Also you can adjust the pickup sensitivity with the slide bar.



Factory Default

WARNING! Only use this button when instructed to by Technical Support. It resets the memory of the TRC-1280 to the factory settings. All your programming will be lost!

Exit

When you have finished adjusting Settings, simply tap the Exit button to return to normal operation.

Maintaining Your TRC-1280

Be careful not to scratch the touch screen, only use your finger to tap the LCD touch screen or use a plastic pen top or PDA stylus. Never use a real pen, pencil or any other sharp object on the screen. Keep it away from extreme cold or heat. The TRC-1280 is not waterproof. Do not use it in any location that is damp or wet. If you spill water on it, take out the battery pack and let the TRC-1280 dry for 48 hours before you try powering it up again. If you spill coffee or another beverage on it, clean it with distilled water. Make sure no water gets inside the TRC-1280. The touch screen contains a glass element. Be careful to not drop the TRC-1280 or slam it against anything.

Use a soft, damp cloth to clean the screen. If the screen still shows finger prints, clean it with watered down window-cleaner. Do not use anything abrasive and don't use too much water, some might leak into the interior.

Specifications

Microprocessor: 533MHz ARM9

RAM: 128Mbyte Mobile DDR

NAND: 128Mbyte

LCD: 2.8 Inch Screen (240 by 320) LCD Backlighting by LED

Sound: Mono 1 watt

Devices: Supports up to 255 Devices with text, less with heavy graphics

usage Pages: Supports up to 255 Pages on each Device with text, less with heavy graphics usage

Macro Capability: Up to 255 steps each, however nesting is allowed

Wi-Fi: IEEE 802.11b/g/n

Battery: Lithium polymer, 2400mAh

Battery Charging Time: 5 Hours

Dimensions: 8.8" Height x 2.3" Wide x 0.9" Thick

Battery Warranty: 1 Year

Weight (without AC Adapter): 7.8 oz

Limited Warranty Statement

1. Limited Warranty and Disclaimers

Universal Remote Control, Inc. ("URC") warrants that the URC equipment shall be free from defects in material and workmanship under normal usage for two (2) years from purchase when such is purchased from URC. **This limited warranty is valid only in the United States of America.** URC warrants that the software will substantially conform in any material respect to its functional specifications at the time of delivery. URC SHALL NOT BE LIABLE FOR OPERATIONAL, TECHNICAL OR EDITORIAL ERRORS AND/OR OMISSIONS MADE IN THE URC DOCUMENTATION. URC DOES NOT WARRANT THAT THE URC SOFTWARE IS BUG-FREE OR ERROR FREE OR THAT THERE ARE NO ERRORS/BUGS IN THE URC SOFTWARE.

URC warrants that at the time of purchase the URC equipment and the URC software complied with all applicable regulations and policies of the Federal Communications Commissions ("FCC") regarding electromagnetic interference caused by electronic/computing devices and to the extent that the URC equipment and/or the URC software fails to so comply, URC shall, at its own expense, take all reasonable measures to promptly cause such to comply.

URC equipment purchases from other than an authorized URC dealer or distributor are without warranty.

THIS LIMITED WARRANTY DOES NOT COVER TECHNICAL ASSISTANCE FOR HARDWARE OR SOFTWARE USAGE EXCEPT AS EXPRESSLY PROVIDED FOR HEREIN, THE EQUIPMENT, SOFTWARE AND DOCUMENTATION OF URC ARE SUPPLIED "AS IS" WITHOUT ANY WARRANTY, EXPRESS, STATUTORY OR IMPLIED, OF ANY KIND. TO THE MAXIMUM EXTENT PERMITTED BY APPLICABLE LAW, URC EXPRESSLY DISCLAIMS ALL WARRANTIES, EXPRESS, STATUTORY OR IMPLIED, INCLUDING BUT NOT LIMITED TO THE WARRANTIES OF MERCHANTABILITY AND FITNESS FOR A PARTICULAR PURPOSE. URC DOES NOT WARRANT, GUARANTEE, OR MAKE ANY REPRESENTATIONS REGARDING THE USE OF, OR THE RESULTS OF THE USE OF, THE EQUIPMENT, SOFTWARE OR DOCUMENTATION IN TERMS OF CORRECTNESS, ACCURACY, RELIABILITY OR OTHERWISE.

EXCEPT AS EXPRESSLY PROVIDED FOR HEREIN, TECHNICAL SERVICES ARE SUPPLIED "AS IS", WITHOUT ANY WARRANTY, EXPRESS, STATUTORY OR IMPLIED, OF ANY KIND. TO THE MAXIMUM EXTENT PERMITTED BY APPLICABLE LAW, URC EXPRESSLY DISCLAIMS ALL WARRANTIES, EXPRESS, STATUTORY OR IMPLIED, INCLUDING BUT

NOT LIMITED TO THE WARRANTIES OF QUALITY OR REASONABLE SKILL AND CARE, OR OUTCOME OR RESULTS. WITHOUT IN ANY WAY LIMITING THE GENERALITY OF THE OTHER PROVISIONS HEREIN, WARRANTY DOES NOT COVER: (I) DAMAGE FROM MISUSE, NEGLIGENCE OR ACTS OF NATURE, (II) MODIFICATIONS, (III) INTEGRATION WITH THIRD PARTY CONTENT (IV) BEYOND THE WARRANTY PERIOD AND/OR FAILURE TO FOLLOW URC WARRANTY CLAIM PROCEDURE.

The warranty limitations and warranty disclaimers may not apply to end user in whole or in part, where such are restricted or excluded by applicable law and such shall apply to the maximum extent permitted by applicable law.

In the event of any warranty claim, URC will, at its sole option, repair the URC equipment using new or comparable rebuilt parts, or exchange the URC equipment for new or rebuilt equipment. **In the event of a defect, these are the end user's exclusive remedies.**

All the URC equipment returned for service, exchange or repair require an RGA number. To obtain an RGA number, you must complete a Return Request Form which you may obtain by calling (914) 835-4484 or contacting URC at returnrequest@universalremote.com. To obtain warranty service, end user must deliver the URC equipment, freight prepaid, in its original packaging or packaging affording adequate protection to URC at 420 Columbus Avenue, Valhalla, NY 10595. It is the end user's responsibility to backup any macro programming, artwork, software or other materials that may have been programmed into the unit. It is likely that such data, software, or other materials will be lost during service and URC will not be responsible for any such damage or loss. A dated purchase receipt, bill of sale, installation contract or other verifiable proof of purchase is required. For the URC equipment support and other important information, please visit URC's website available at www.universalremote.com or call the Customer Service Center at (914) 835-4484.

This limited warranty only covers the URC equipment issues caused by defects in material or workmanship during ordinary consumer use. It does not cover product issues caused by any other reason, including but not limited to product issues due to commercial use, acts of God, third-party installation, misuse, limitations of technology, or modification of or to any part of the URC equipment. This limited warranty does not cover the URC equipment sold as used, as is, refurbished, so called "B stock" or consumables (such as batteries). This limited warranty is invalid if the factory applied serial number has been altered or removed from the URC equipment. **This limited warranty specifically excludes the URC equipment sold by unauthorized resellers.**

With the exception of URC's IR-only, broad-based consumer remotes, none of URC's PC programmable remotes or any of our Total Control® whole-house equipment are authorized for online internet sales. Buying URC's PC programmable remotes or any of our Total Control® whole-house equipment online means buying equipment that does not have a URC's limited warranty. Such equipment is not eligible for URC tech support or software support, either.

2. URC'S Limitations of Liability

IN NO EVENT SHALL URC BE LIABLE FOR INDIRECT, SPECIAL, INCIDENTAL, EXEMPLARY, PUNITIVE OR CONSEQUENTIAL DAMAGES OF ANY KIND OR LOSS OF PROFITS OR BUSINESS OPPORTUNITY, EVEN IF URC IS ADVISED OF THE POSSIBILITY OF SUCH DAMAGES.

IN NO EVENT SHALL URC BE LIABLE FOR LOSS OF OR DAMAGE TO DATA, COMPUTER SYSTEMS OR COMPUTER PROGRAMS. URC'S LIABILITY, IF ANY, FOR DIRECT DAMAGES OF ANY FORM SHALL BE LIMITED TO ACTUAL DAMAGES, NOT IN EXCESS OF AMOUNTS PAID BY END USER FOR THE URC EQUIPMENT.

IN NO EVENT SHALL URC BE LIABLE FOR ANY EVENTS BEYOND ITS CONTROL, INCLUDING ANY INSTANCE OF FORCE MAJEURE. IN NO EVENT SHALL URC BE LIABLE FOR THE ACTS OR OMISSIONS OF END USER OR ANY THIRD PARTY.

THE LIMITATIONS OF LIABILITY MAY NOT APPLY TO END USER IN WHOLE OR IN PART, WHERE SUCH ARE RESTRICTED LIMITED OR EXCLUDED BY APPLICABLE LAW AND SUCH SHALL APPLY TO THE MAXIMUM EXTENT PERMITTED BY APPLICABLE LAW.

URC SHALL NOT BE HELD RESPONSIBLE FOR THE STATEMENTS MADE BY OTHERS.

SOME STATES OR JURISDICTIONS DO NOT ALLOW THE EXCLUSION OR LIMITATION OF INCIDENTAL OR CONSEQUENTIAL DAMAGES, OR ALLOW LIMITATIONS ON HOW LONG AN IMPLIED WARRANTY LASTS, SO THE ABOVE LIMITATIONS OR EXCLUSIONS MAY NOT APPLY TO END USER. THIS LIMITED WARRANTY GIVES END USER SPECIFIC LEGAL RIGHTS AND END USER MAY HAVE OTHER RIGHTS WHICH VARY FROM STATE TO STATE OR JURISDICTION TO JURISDICTION.

End User Agreement

The terms and conditions of the End User Agreement are available at www.universalremote.com/eua.php shall apply.

Precautions and Information Concerning Rechargeable Lithium Polymer Batteries

- ◆ If you will not be using your remote control for an extended period of time, be sure to remove the battery
- ◆ Do not attempt to disassemble, alter or apply heat to the battery.
- ◆ Use care to avoid dropping the battery or subjecting it to severe impact that could damage the case.
- ◆ The battery should not be immersed in water.
- ◆ Risk of explosion if battery is replaced by an incorrect type.
- ◆ Dispose of used batteries according to the instructions.
- ◆ Lithium Polymer Batteries are recyclable. For the address of a recycle drop-off location near you call toll free 1-800-822-8837 or visit <http://www.rbr.com>

Federal Communication Commission Interference Statement

This equipment has been tested and found to comply with the limits for a Class B digital device, pursuant to part 15 of the FCC Rules. These limits are designed to provide reasonable protection against harmful interference in a residential installation. This equipment generates, uses and can radiate radio frequency energy and, if not installed and used in accordance with the instructions, may cause harmful interference to radio communications. However, there is no guarantee that interference will not occur in a particular installation. If this equipment does cause harmful interference to radio or television reception, which can be determined by turning the equipment off and on, the user is encouraged to try to correct the interference by one more of the following measures:

- ◆ Reorient or relocate the receiving antenna.
- ◆ Increase the separation between the equipment and receiver.
- ◆ Connect the equipment into an outlet on a circuit different from that to which the receiver is connected.
- ◆ Consult the dealer or an experienced radio/TV technician for help.

Warning!

Changes or modifications not expressly approved by the manufacturer could void the user's authority to operate the equipment.

Note : The manufacturer is not responsible for any Radio or TV interference caused by unauthorized modifications to this equipment. Such modifications could void the user's authority to operate the equipment.

FCC Caution

This device complies with Part 15 of the FCC Rules. Operation is subject to the following two conditions: (1) this device may not cause harmful interference, and (2) this device must accept any interference received, including interference that may cause undesired operation.

Any changes or modifications not expressly approved by the party responsible for compliance could void the authority to operate equipment.

The antenna(s) used for this transmitter must not be co-located or operating in conjunction with any other antenna or transmitter.

Federal Communication Commission (FCC) Radiation Exposure Statement

This remote device is approved as a hand-held and hand-operated only portable (relative to hand) device which is normally operated at 20 cm from a person's body.

Regulatory Information to the User

■ CE conformity Notice

Products with “CE” marking comply with the R&TTE Directive 1995/5/EC, EMC Directive 2004/108/EC and Low Voltage Directive 2006/95/EEC issued by the commission of the European Community.

1) R&TTE Directive

- Safety : EN 60950-1
- EMC : ETSI EN 301 489-1,3, 17
- RF : ETSI EN 300 220-1,2
: ETSI EN 300 328

2) EMC Directive

- Emission : EN 55022
- Immunity : EN 55024
- Power : EN-61000-3-2, 3

3) Low Voltage Directive

- Product safety : EN 60950-1


■ Safety instruction for charging internal rechargeable battery of remote control

Use only with EN60950-1 approved as Limited power source and double insulation(□) marked power adaptor & same ratings described on the product label (6Vdc, 2.0A).

■ Declaration of Conformity

“Hereby, Universal Remote Control Inc. declares that this TRC-1280 is in compliance with the Essential requirements and other relevant provisions of Directive 1999/5/EC.”



Certification	CE 2200
Type No.(Model No.)	TRC-1280
Batch/Serial No.	-
Power Rating	6.0V  , 2.0A
Frequency band	WiFi: IEEE 802.11b/g/n

Declaration of Conformity

Company Name : Universal Remote Control Inc.
 Company Address : 500 Mamaroneck Avenue, Harrison, NY 10528, U.S.A
 Contact Information : www.universalremote.com
 Phone: (914)835-4484 Fax: (914)835-4532
 Brand Name : UNIVERSAL remote control
 Product Name : RF Remote Controller
 Model Name : TRC-1280

This product herewith complies with the requirements of EMC Directive (2004/108/EC) and R&TTE Directive(1995/5/EC) issued by the Commission of the European Community

Compliance with these directives implies conformity to the following European Community

- EMC Directive
 - EN 55022
 - EN 55024
 - EN 61000-3-2
 - EN 61000-3-3
- R&TTE Directive
 - EN 60950-1
 - ETSI EN 301-489-1,3,17
 - ETSI EN 300 220-1,2
 - ETSI EN 300 328-

List of test reports and/or certificate verified compliance with the standards above

- EMC Directive
 - Report No.
 - Testing Laboratory : Gumi College EMC Center
- R&TTE Directive
 - Certificate No.
 - Certificate Body : SIEMIC Rheinland (No. 2200)

Date of issue : May 30, 2010

Name and signature of authorized person : James Novak
 Senior Product Manager
 Universal Remote Control Inc.



500 Mamaroneck Avenue, Harrison, NY 10528

Phone: (914) 835-4484 Fax: (914) 835-4532

www.universalremote.com



OCE-0073C Rev 03